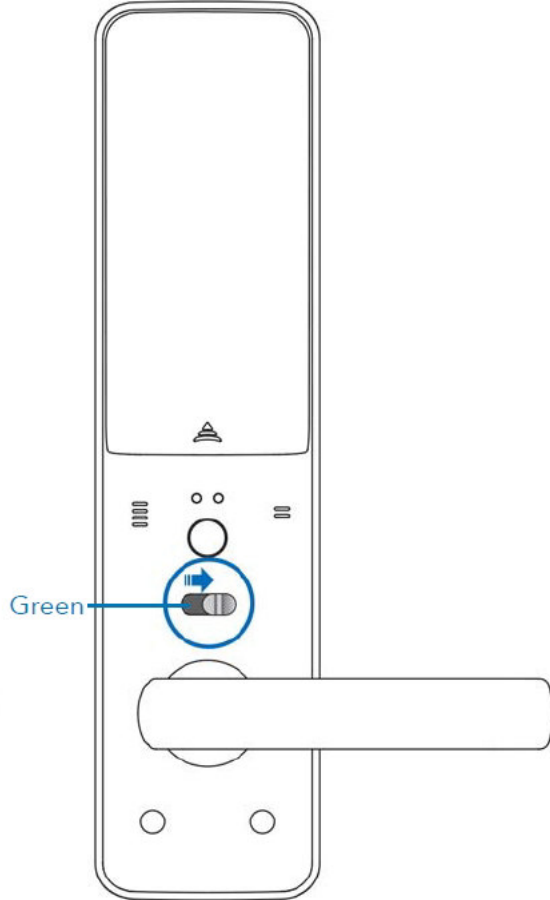


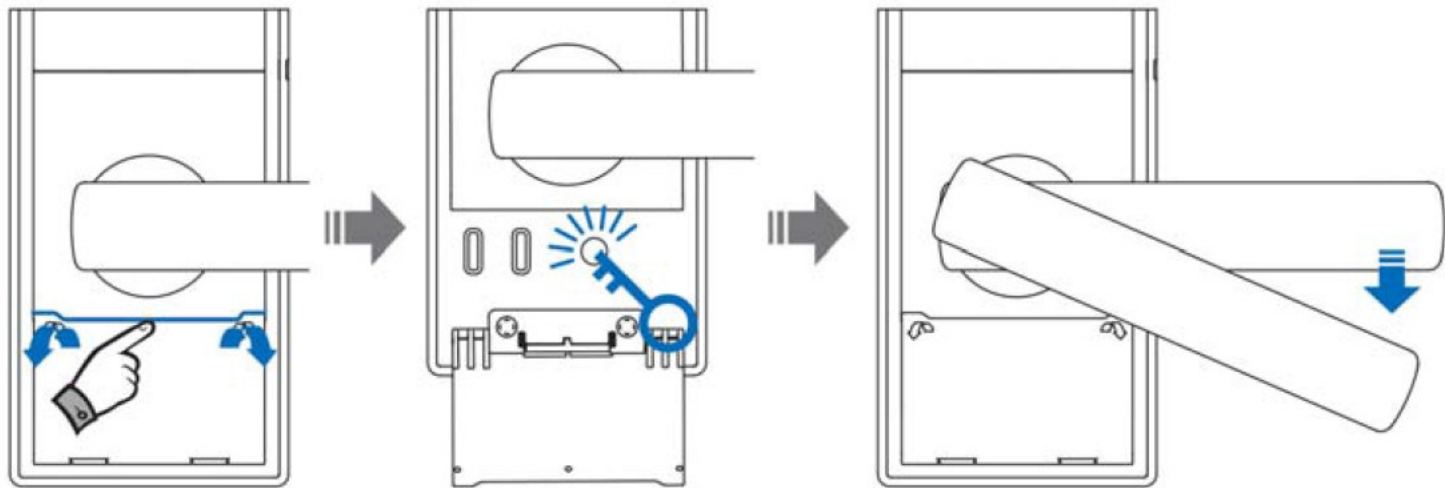
### Privacy mode ON

Door cannot be unlocked from the outside



### Privacy mode OFF

Normal operation. Door can be unlocked from the outside



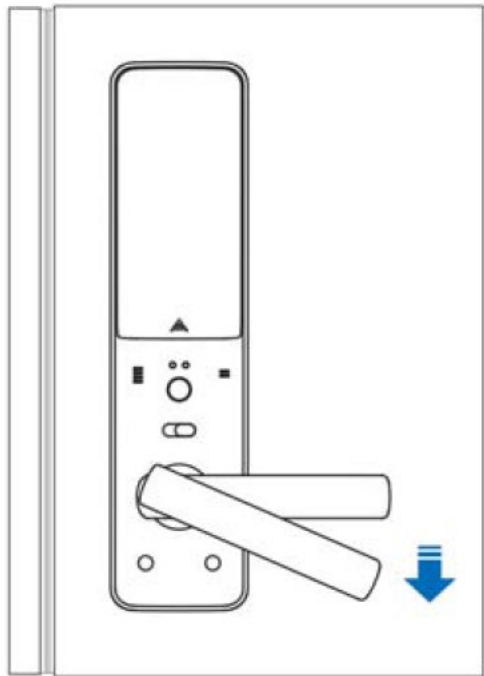
Open cover  
directly beneath  
front door handle

Insert manual  
override key and  
rotate

Door handle can  
now be rotated  
for access

#### NOTE

- Please keep manual override key in a safe, separate place for use in emergencies.



## Panic Release Feature

The door can be opened from the inside at any time by simply pulling down the handle.

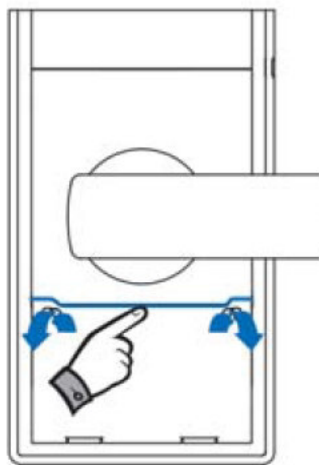
This feature allows easy escape in case of an emergency.

## How to apply external power if batteries run out

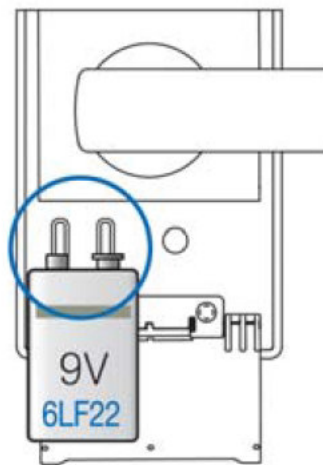
When the batteries are entirely exhausted, a 9V battery can be used on the emergency power terminals to allow access. Once the door lock has been reactivated by the 9V battery, access can be gained via PIN, card/fob or fingerprint. The batteries in the back of the lock can then be replaced (see p.7).



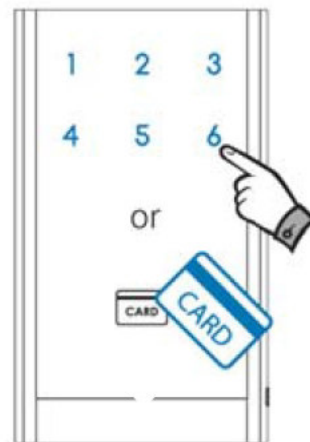
Front pad will not illuminate when batteries are exhausted



Open cover directly beneath front door handle



Touch terminals with 9V battery (place + and - on either terminal)



Access via PIN or card/fob

- Weather resistant (tested to IP54)
- Two year guarantee
- Double locking

## NOTE

- The life of batteries is around one year, based on ten entries/exits per day.
- Battery life can vary depending on battery's manufacturer, production date, installation environment and usage frequency.
- Second hand batteries and/or the use of batteries other than those specified is likely to cause a malfunction.
- Do not use rechargeable batteries as battery leakage may occur.
- Check batteries at least every 6 months and if there is any leakage, replace with new batteries.



## Motion Sound Volume Control Function up to 8 Levels

Motion sound volume may be controlled from silence up to level 8 as preferred.



Patent Function



8

## I Mechanical Mortise Lock Method

# A mortise lock finished with strong security and reliability

Soft Latch Bolt,  
Facile Direction Change

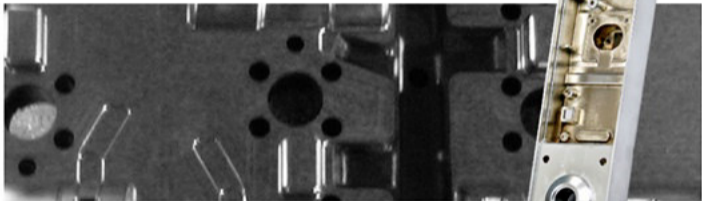
Trigger Operating  
the Deadbolt

Deadbolt Interlocking  
with the Trigger

Handle Loose Turn Prevention  
Structure Linker and Cam



## Safety Up with Strong Aluminum Alloy Die-casting Body !



Largely improved safety & reliability of an overall strong body designed with aluminum alloy die-casting method.



### Emergency warning function in case of illegal trespassing

An Alarm of 80dB will go off for 2 minutes when door is destroyed forcibly for illegal trespassing.



## I Panic Release Handle Method



### Panic Release Handle Method

Escape when in emergency is easier as door opens with the motion of pulling down the handle

